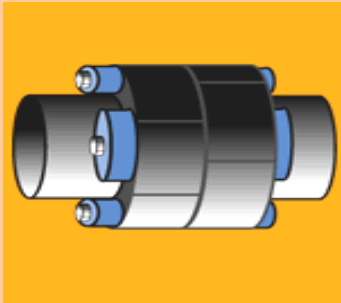


**CALPICO  
INC.**

# CALPICO Pipe Linx

**Your Supplier  
for Pipe  
Penetration  
Seals**

CALPICO Pipe Linx form a mechanical rubber seal between pipes going through walls, floors, vaults, tanks, and pipeline casings. Calpico Pipe Linx make a watertight seal between a pipe and a wall hole. They can also seal the gap between an inner pipe and outer pipe sleeve or pipeline casing. They seal the gap between electrical conduit and the outer conduit, or between electrical conduit and the wall hole it passes through.



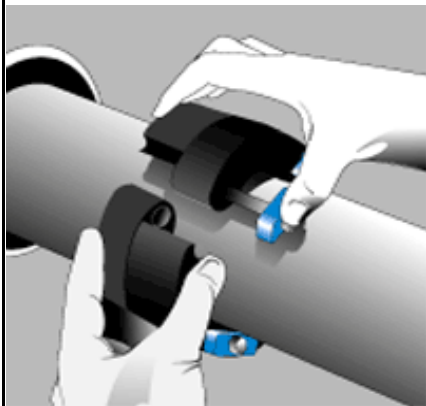
CALPICO Pipe Linx are designed to make a hydrostatic seal of up to 20 psig & 40 ft. of head. The linx, in addition to their sealing properties, help absorb vibrations, shocks, and sound waves. They also insulate the inner pipe from all other outer structures, including outer pipe sleeves, pipeline casing, walls, and tanks.



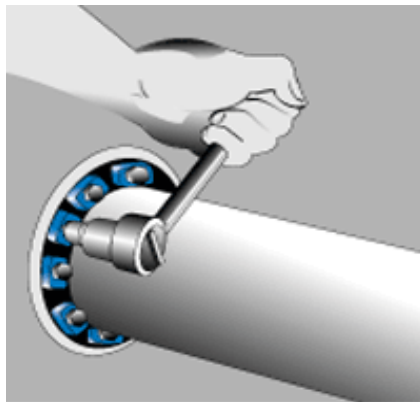
CALPICO Pipe Linx are made from EPDM synthetic rubber with heavy duty plastic pressure plates, which are resistant to sunlight and ozone. Linx are also available in Nitrile for petroleum based applications. All bolts and nuts are plated with an anti-corrosive zinc coating. Stainless steel bolts and nuts, both 304 & 316 grade, are also available. SEE CHART #102 FOR TYPE OF LINX AVAILABLE.

Twelve different sizes of CSL Linx are available, which make up most pipe sizes from 1/2" up to 100". Special Linx for unusual sizes can also be made.

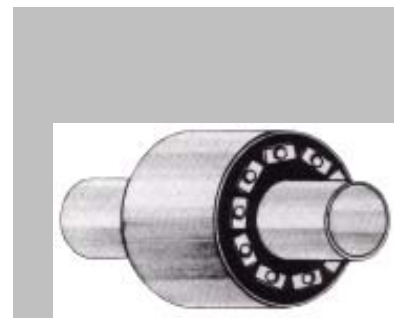
## TYPICAL OVERVIEW:



**LINX PRIOR TO TIGHTENING**



**TIGHTENING OF LINX TO  
FORM A AIR TIGHT AND A  
WATER TIGHT SEAL.**



**INSTALLATION COMPLETE**

Boxed CSL Linx include Installation Instructions for an easy assembly in a step-by-step manner. Special tools are not required.

### **PLANT & OFFICE LOCATION:**

*1387 San Mateo Ave.*

*So. San Francisco, CA 94080*

*Ph: 650 588-2241 or 800 998-9115 Fax: 650 873-6952*